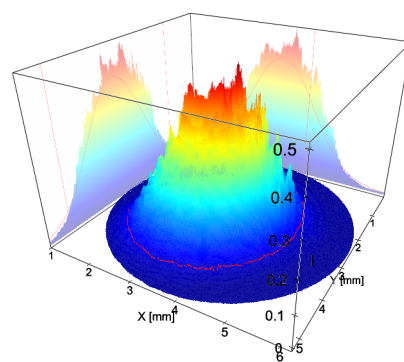
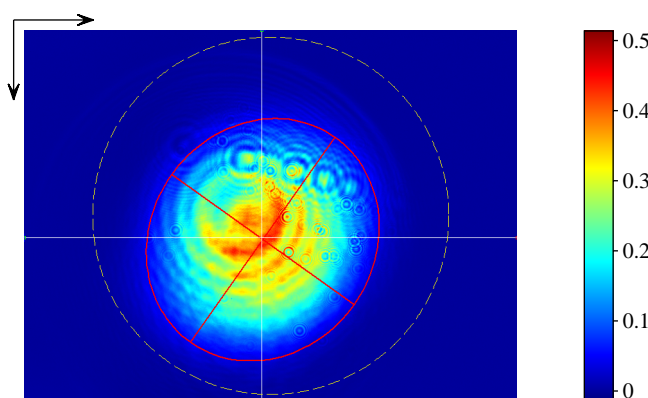
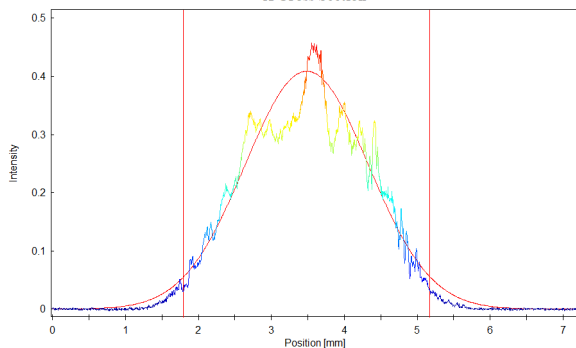


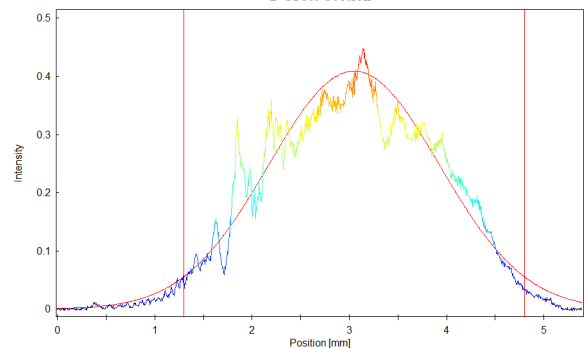
| | | | | | |
|-----------------|--------------------|------------------|---------|----------------------|-----|
| User: | | Type: | | Beam Attenuator: | |
| Camera: | CinCam CMOS 1203 | Wavelength: | 1064 nm | Beam Splitter: | |
| Serial: | 1203-U2-4521-0117 | Manufacturer: | | Focusing Element: | |
| Accessory Type: | plain | Model: | | Other Optical Units: | |
| Date: | 2026/06/18 木曜日 | Serial Number: | | Laser Temp.: | |
| Type: | Single Measurement | Polarization: | | Ambient Temp.: | |
| Frames: | 24 | Output Power: | | Humidity: | |
| Frequency: | | Operation Mode: | CW | Background: | yes |
| Pixel Size: | 1600 x 1200 | Pulse Energy: | | Flat Field: | no |
| Comment: | | Pulse Width: | | Angular Response: | no |
| Exposure Time: | 4.500 ms | Pulse Frequency: | | Baseline: | yes |
| Gain: | 1.00 x | M^2: | | Linearity: | no |
| Brightness: | invalid | Comment: | | | |



X Cross Section



Y Cross Section



Statistic

Number of Pixel: 807553
 Power: 8.894E+4
 Peak: 0.5137
 Peak Pos x: 3.776 mm
 Peak Pos y: 2.691 mm
 SNR: 52.0 dB

Gauss-Fit (D 4.00 Sigma ~ 1/e^2)

Exponent: 2.00
 Centroid x: 3.482 mm
 Centroid y: 3.047 mm
 --- Width Lab ---
 Width x: 3.401 mm
 Width y: 3.529 mm
 --- Width Beam ---
 Width Major: 3.654 mm
 Width Minor: 3.265 mm
 Azimuth Angle: -54.64 deg
 Ellipticity: 0.894
 Eccentricity: 0.449

 Cross-Sect. Area: 9.372 mm^2
 Power Fraction: 88.22 %
 GFI: 0.973
 Correlation: 0.813